

Sketch I made before I started painting.





When I designed this piece I thought of a S composition..

You can see how I have more than on S curve here.

Wanting the outer space to look interesting.

I used a pen to draw out the design. You can trace it.

Mixing the paints are very important.

Put a small amount of paint on a tile make a little hole in the center add Copalia to the center. Mix well it will be a thick ink consistency, add Turpentine to thin or Mineral Spirits.

Paint several strokes next to each other if they will go from dark to light and now flow together you have the right consistency.

I used Dresden brushes for this but you can use a small square shade, On the Tulip markings you need a pointer and stems. Also for accents.

**Tulip:** Mixing Yellow shade with Pecan. Markings are Deep Ruby. Make brush strokes in direction of growth,

**Mum** Like any White flower I blocked it in with Mixing Yellow, Soft Pink, and Deep Blue Green. Wipe out mum petals.

**Morning Glory,** Color used Deep Blue Green, Flag Blue, Cobalt Blue, Markings are Soft Rose. First fire you can leave it white and put in on second fire. Center is Mixing Yellow and Pecan also tube as well

**Forget-me-nots:** Deep Blue Green, Cobalt Blue, Centers, Mixing Yellow shade with Yellow Red

**Daisy** Soft Pink, Soft Rose, Centers \_Mixing Yellow and Yellow Red.

Wipe out good high lights on some of the petals.

Leave highlights.

**These Ruby Flowers** are called Primula. I used ruby for these.. They have a yellow tube similar to the Morning Glory.

The Yellow filler flowers are Mixing Yellow with a bit of Pecan.

**Leaves:** Are painted with Chartreuse and Antique Green, Darkest areas on leaves are Black Green in shadow areas,

Fire 015



## First Fire

Try too get as much depth as possible as this painting is only two fires.

This is second fire, What I did here was add depth with same colors Use same colors as first fire for more depth.

I washed, Flag Blue, Soft Pink and Mixing Yellow and wipe out the petals again leave high-lights, Add Mixing Yellow and Pecan in center or Mum. Add a bit of depth with blue and pink at the bottom of the Mum.

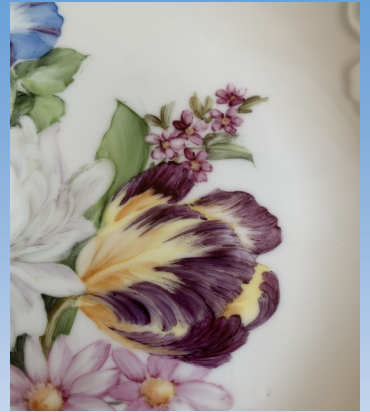
Wash Flag Blue over Primulas and flag blue on the Pink Daisy.

Add centers in Yellow and Yellow Red where needed. Fire 016

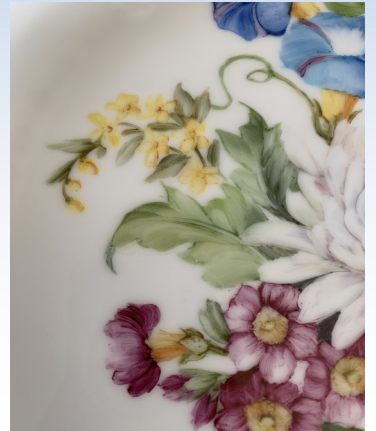




Adding color to centers



Before Washes



Color washed on the Mum



Finished Paintings